

RPL35 Antibody (C-term)
Affinity Purified Rabbit Polyclonal Antibody (Pab)
Catalog # AP12959b**Specification**

RPL35 Antibody (C-term) - Product Information

Application	IHC-P, WB,E
Primary Accession	P42766
Other Accession	Q29361 , Q98TF7 , Q3MHM7 , NP_009140.1
Reactivity	Human, Mouse
Predicted	Bovine, Chicken, Pig
Host	Rabbit
Clonality	Polyclonal
Isotype	Rabbit IgG
Calculated MW	14551
Antigen Region	86-115

RPL35 Antibody (C-term) - Additional Information**Gene ID** 11224**Other Names**

60S ribosomal protein L35, RPL35

Target/Specificity

This RPL35 antibody is generated from rabbits immunized with a KLH conjugated synthetic peptide between 86-115 amino acids from the C-terminal region of human RPL35.

Dilution

IHC-P~~1:10~50

WB~~1:1000

E~~Use at an assay dependent concentration.

Format

Purified polyclonal antibody supplied in PBS with 0.09% (W/V) sodium azide. This antibody is purified through a protein A column, followed by peptide affinity purification.

Storage

Maintain refrigerated at 2-8°C for up to 2 weeks. For long term storage store at -20°C in small aliquots to prevent freeze-thaw cycles.

Precautions

RPL35 Antibody (C-term) is for research use only and not for use in diagnostic or therapeutic procedures.

RPL35 Antibody (C-term) - Protein Information**Name** RPL35

Function Component of the large ribosomal subunit (PubMed:[12962325](#), PubMed:[23636399](#), PubMed:[32669547](#)). The ribosome is a large ribonucleoprotein complex responsible for the synthesis of proteins in the cell (PubMed:[12962325](#), PubMed:[23636399](#), PubMed:[32669547](#)).

Cellular Location

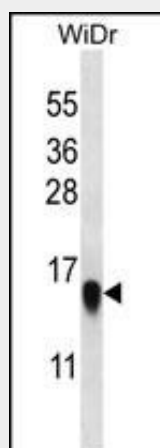
Cytoplasm.

RPL35 Antibody (C-term) - Protocols

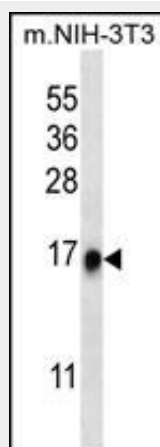
Provided below are standard protocols that you may find useful for product applications.

- [Western Blot](#)
- [Blocking Peptides](#)
- [Dot Blot](#)
- [Immunohistochemistry](#)
- [Immunofluorescence](#)
- [Immunoprecipitation](#)
- [Flow Cytometry](#)
- [Cell Culture](#)

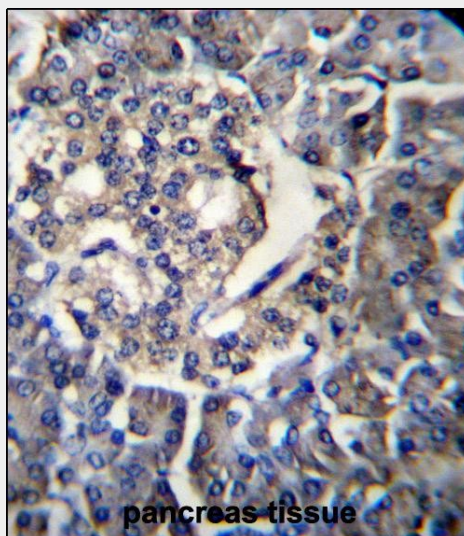
RPL35 Antibody (C-term) - Images



RPL35 Antibody (C-term) (Cat. #AP12959b) western blot analysis in WiDr cell line lysates (35ug/lane). This demonstrates the RPL35 antibody detected the RPL35 protein (arrow).



RPL35 Antibody (C-term) (Cat. #AP12959b) western blot analysis in mouse NIH-3T3 cell line lysates (35ug/lane). This demonstrates the RPL35 antibody detected the RPL35 protein (arrow).



RPL35 Antibody (C-term) (Cat. #AP12959b) immunohistochemistry analysis in formalin fixed and paraffin embedded human pancreas tissue followed by peroxidase conjugation of the secondary antibody and DAB staining. This data demonstrates the use of RPL35 Antibody (C-term) for immunohistochemistry. Clinical relevance has not been evaluated.

RPL35 Antibody (C-term) - Background

Ribosomes, the organelles that catalyze protein synthesis, consist of a small 40S subunit and a large 60S subunit. Together these subunits are composed of 4 RNA species and approximately 80 structurally distinct proteins. This gene encodes a ribosomal protein that is a component of the 60S subunit. The protein belongs to the L29P family of ribosomal proteins. It is located in the cytoplasm. As is typical for genes encoding ribosomal proteins, there are multiple processed pseudogenes of this gene dispersed through the genome.

RPL35 Antibody (C-term) - References

Chen, I.J., et al. Biochem. Cell Biol. 86(3):271-277(2008)
Ewing, R.M., et al. Mol. Syst. Biol. 3, 89 (2007) :
Oh, J.H., et al. Mamm. Genome 16(12):942-954(2005)
Andersen, J.S., et al. Nature 433(7021):77-83(2005)
Humphray, S.J., et al. Nature 429(6990):369-374(2004)